

BULLYING SURVEY

**Among Ontario's Elementary and
Secondary Teachers
and Education Workers**

**Conducted in
April 2005**



Ontario Secondary School Teachers' Federation



Elementary Teachers' Federation of Ontario



Ontario English Catholic Teachers' Association

OBJECTIVES/METHODOLOGY

) OBJECTIVES

- 5 Document the incidence of the bullying of Ontario's teachers
- 5 Understand how bullying occurs—who did the bullying? when did bullying start? how was the bullying handled? what were the impacts on the individuals who were bullied?

) METHODOLOGY

- 5 Survey of 1,156 randomly selected teacher members of the OSSTF, ETFO and OECTA
- 5 Interviewing conducted during first two weeks of April 2005

- 5 Conducted using computer assisted telephone interviewing (CATI)

- 5 Equal number of interviews for each teacher union
- 5 Quotas for each union by region of the province
- 5 French-language interviewing available to respondents

- 5 Margin of error for sample of 1,156 teachers is ± 2.9 percent at 95 percent confidence interval
- 5 Margins of error are larger for each teacher union (± 4.9 percent) and demographic subsamples, therefore, should be interpreted more cautiously

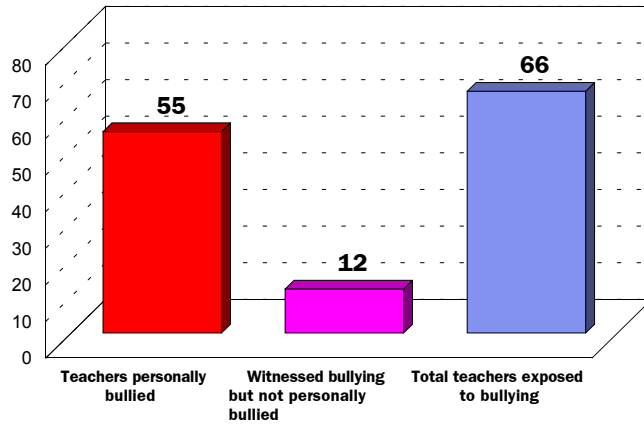
Presentation

1. Incidence of bullying
2. Bullying by a student
3. Bullying by a parent/guardian
4. Bullying by a superior
5. Bullying by a colleague
6. The nature of bullying
7. Violence in schools
8. Awareness of bullying policies
9. What did we learn?

1 - Incidence of Bullying

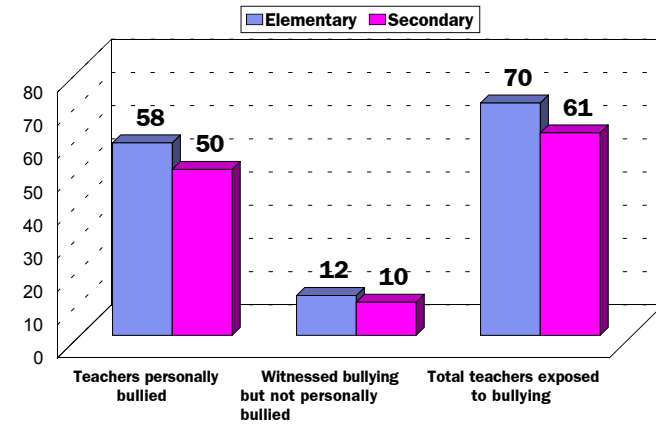
Bullying Incidence

Percent of Teachers



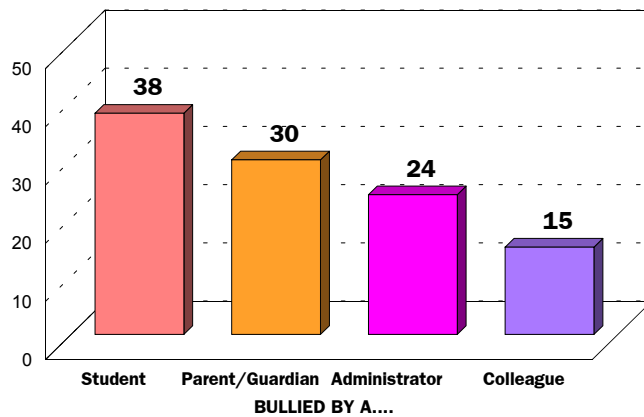
Bullying Incidence

Percent of Elementary/Secondary Teachers



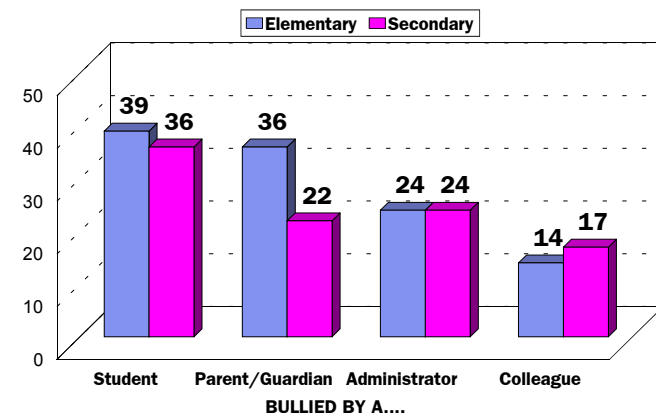
Source of Bullying

Percent of Teachers



Source of Bullying

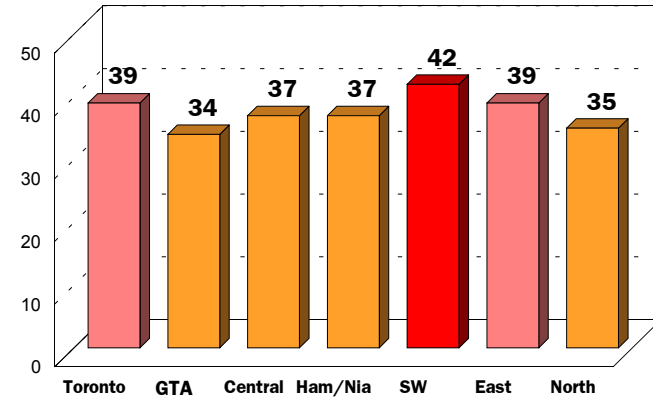
Percent of Elementary/Secondary Teachers



2 - Bullying by a Student

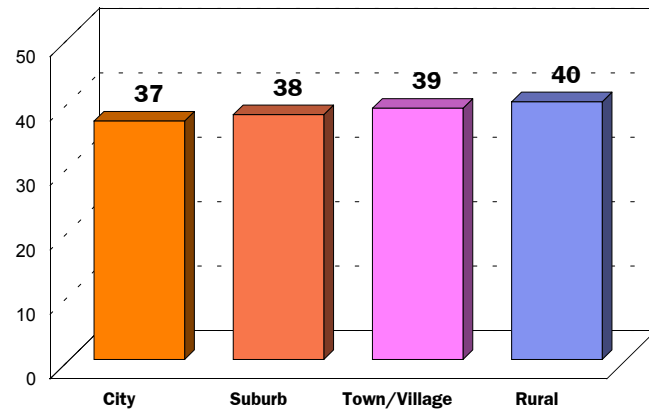
Bullying by a Student

Percent of Teachers by Region



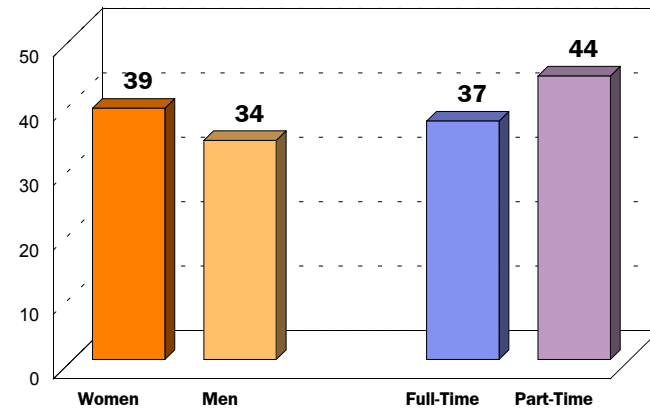
Bullying by a Student

Percent of Teachers by Community Size



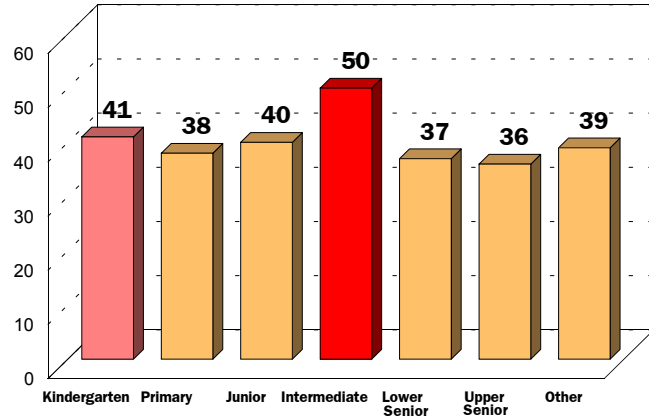
Bullying by a Student

Percent of Teachers in Subgroup



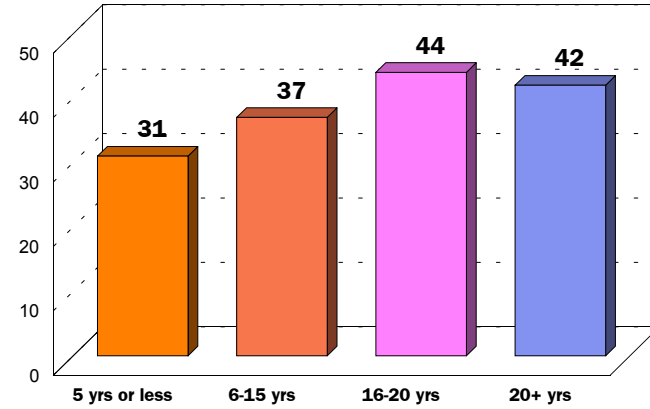
Bullying by a Student

Percent of Teachers by Grade Taught

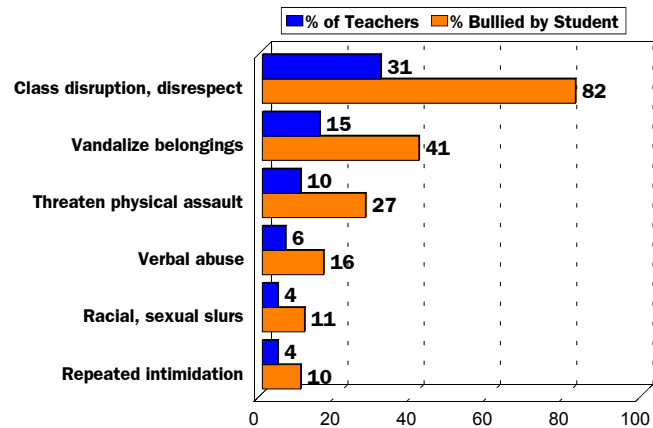


Bullying by a Student

Percent of Teachers by Experience

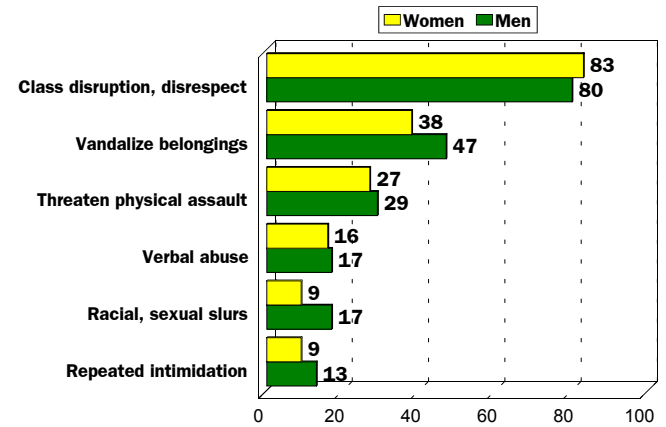


Bullying by a Student



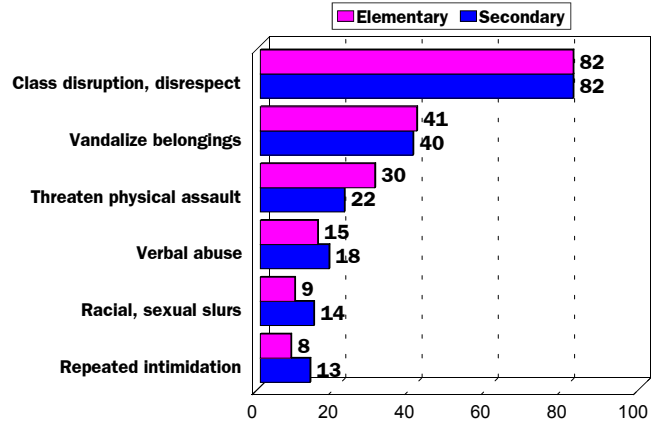
Bullying by a Student

Percent of Teachers Bullied by a Student



Bullying by a Student

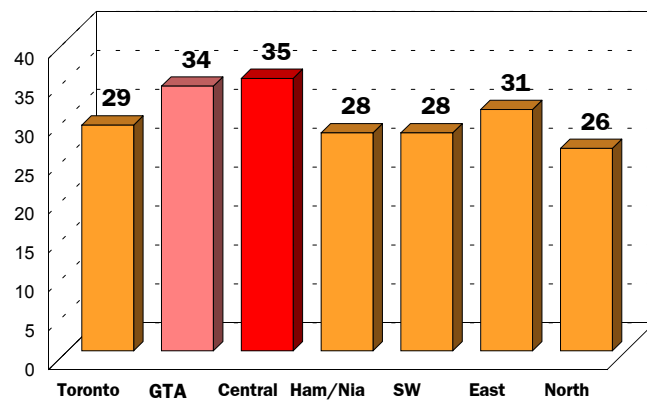
Percent of Teachers Bullied by a Student



3 - Bullying by a Parent/Guardian

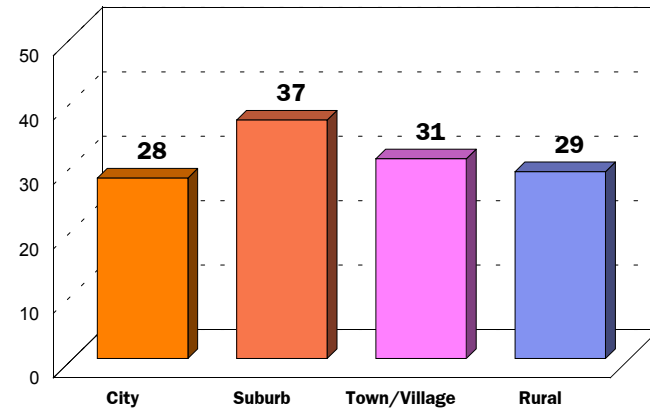
Bullying by a Parent

Percent of Teachers by Region



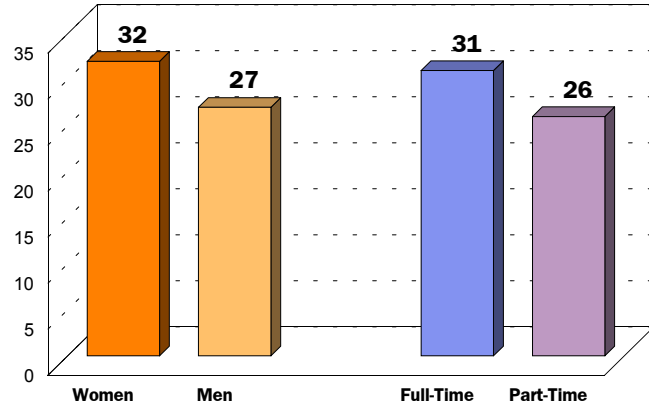
Bullying by a Parent

Percent of Teachers by Community Size



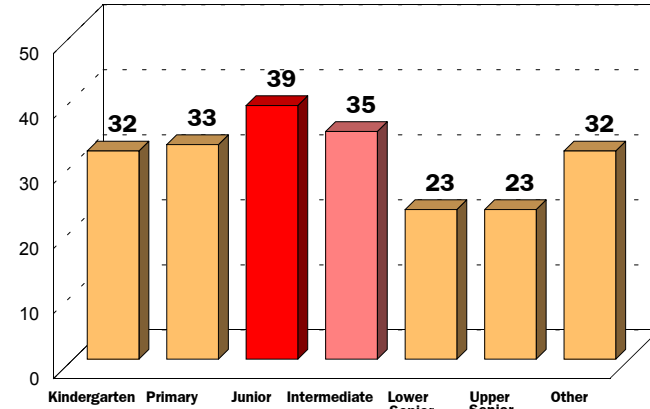
Bullying by a Parent

Percent of Teachers in Subgroup



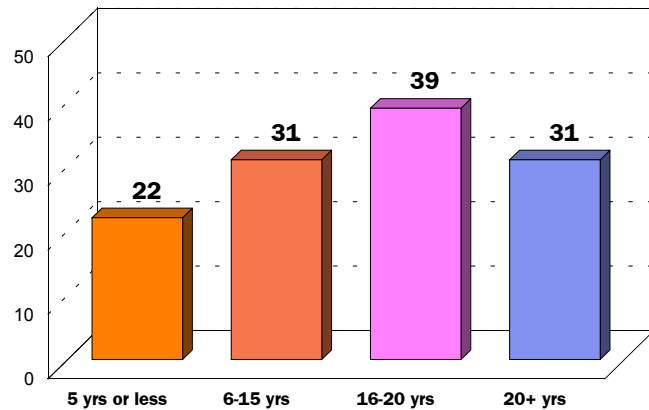
Bullying by a Parent

Percent of Teachers by Grade Taught

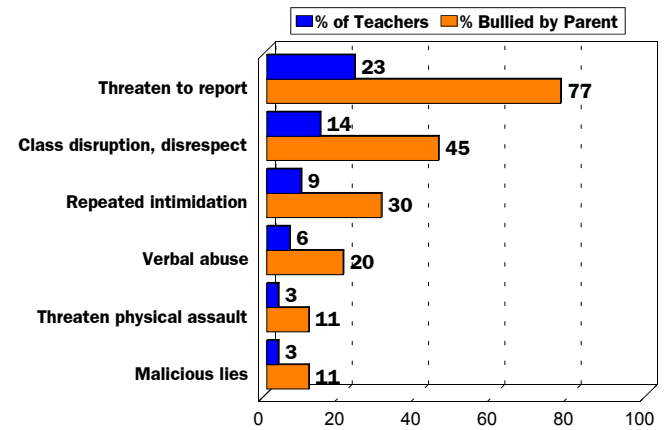


Bullying by a Parent

Percent of Teachers by Experience

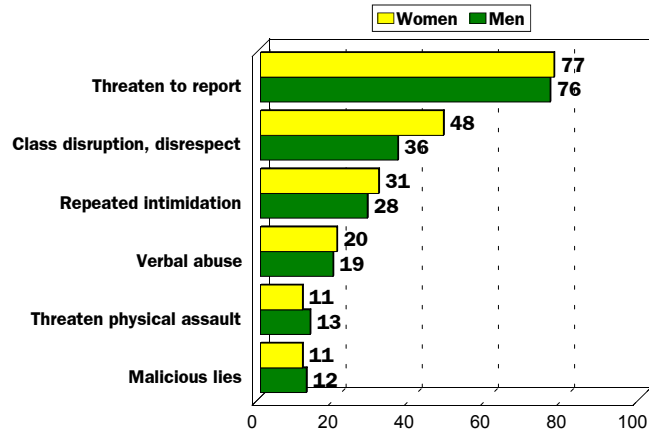


Bullying by a Parent



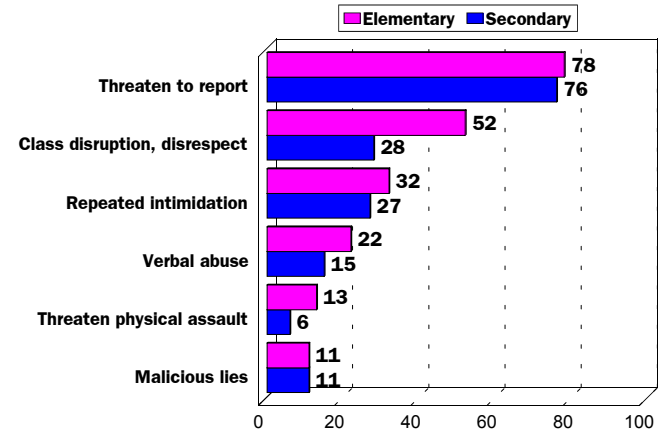
Bullying by a Parent

Percent of Teachers Bullied by a Parent



Bullying by a Parent

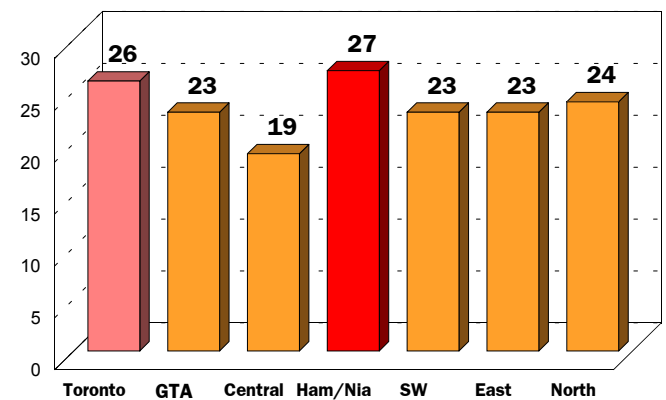
Percent of Teachers Bullied by a Parent



4 - Bullying by a Superior

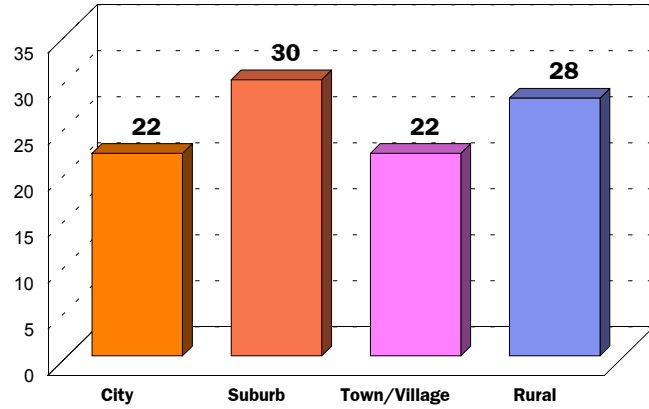
Bullying by a Superior

Percent of Teachers by Region



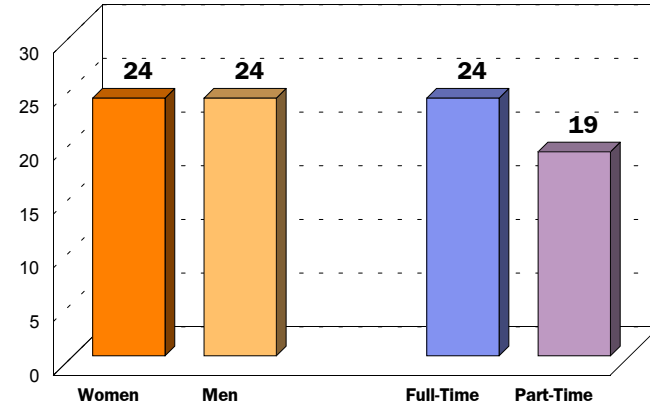
Bullying by a Superior

Percent of Teachers by Community Size



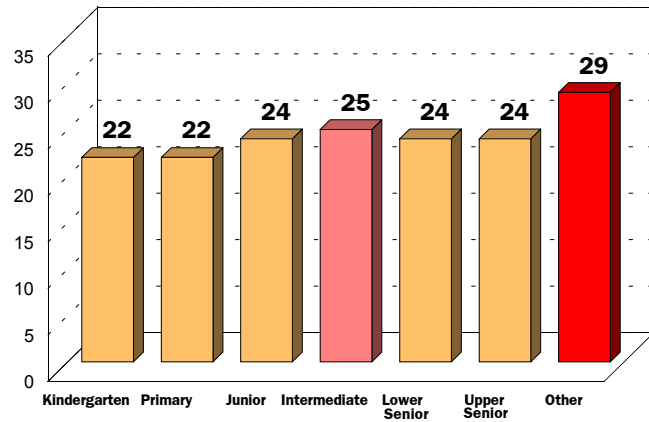
Bullying by a Superior

Percent of Teachers in Subgroup



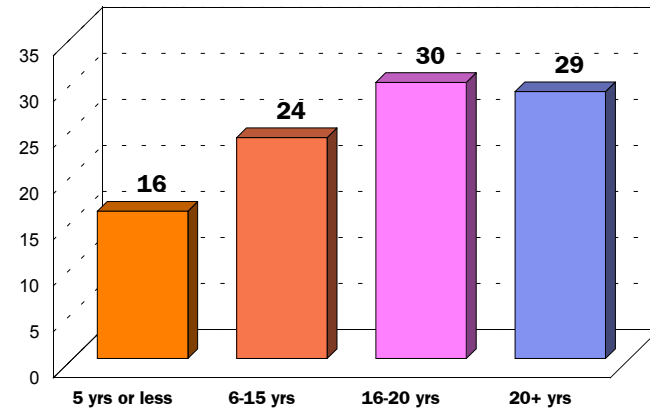
Bullying by a Superior

Percent of Teachers by Grade Taught

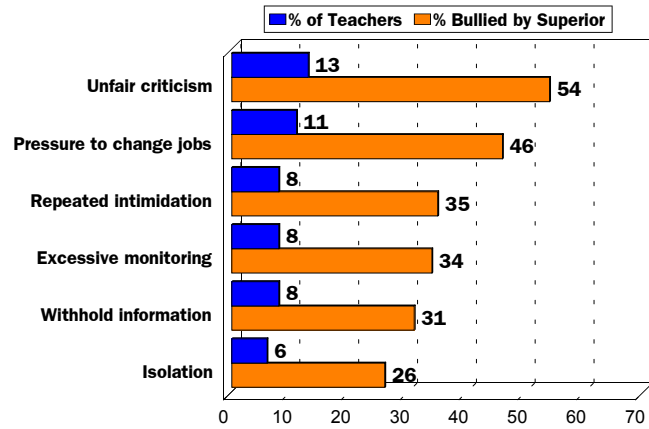


Bullying by a Superior

Percent of Teachers by Experience

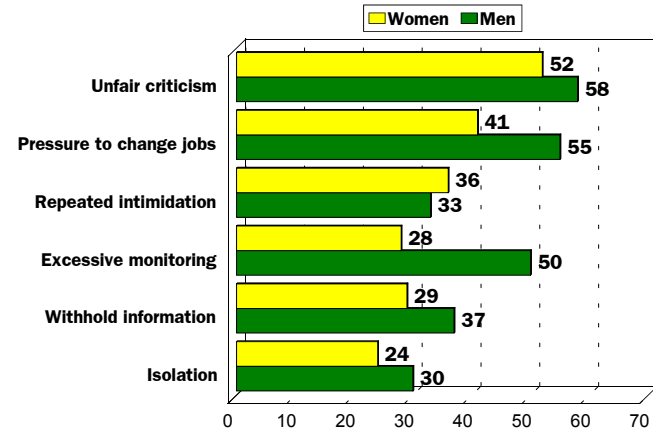


Bullying by a Superior



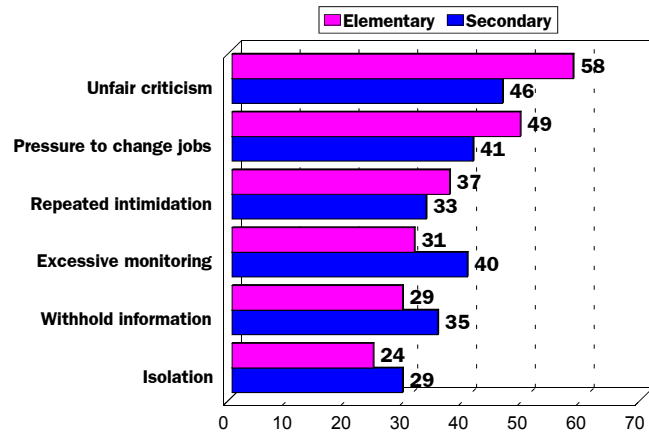
Bullying by a Superior

Percent of Teachers Bullied by a Superior



Bullying by a Superior

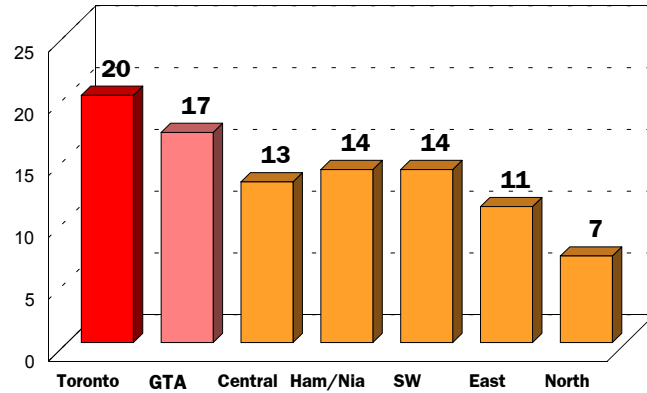
Percent of Teachers Bullied by a Superior



5 - Bullying by a Colleague

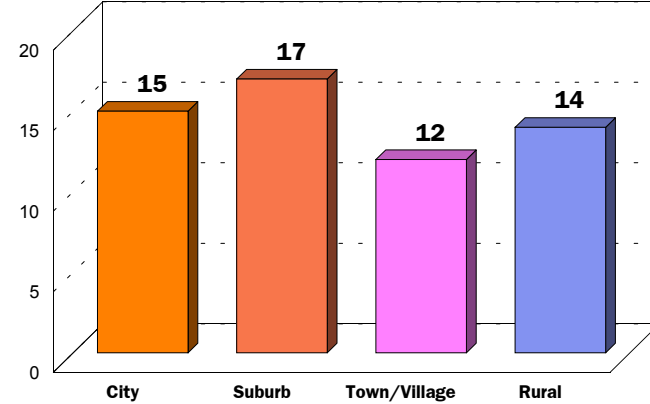
Bullying by a Colleague

Percent of Teachers by Region



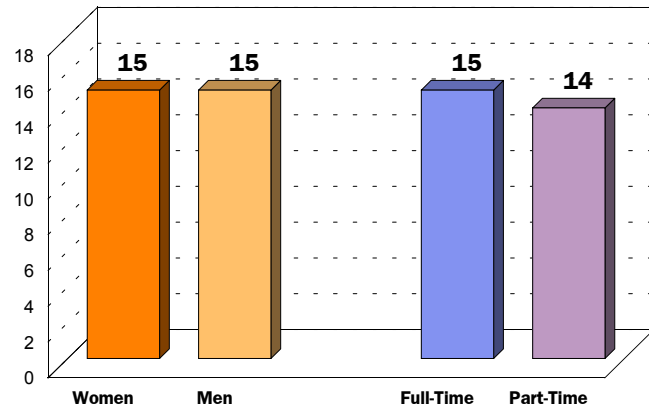
Bullying by a Colleague

Percent of Teachers by Community Size



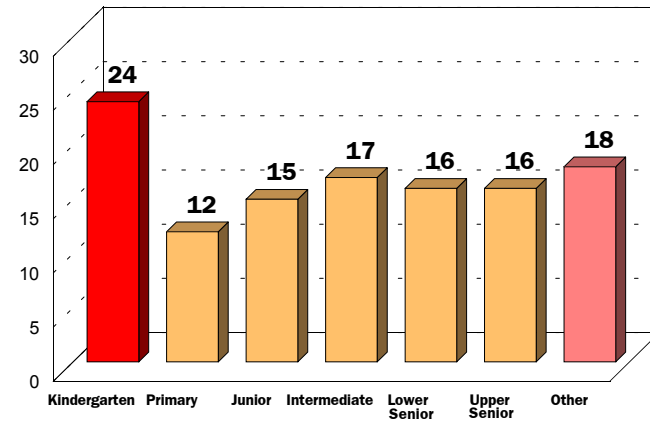
Bullying by a Colleague

Percent of Teachers in Subgroup



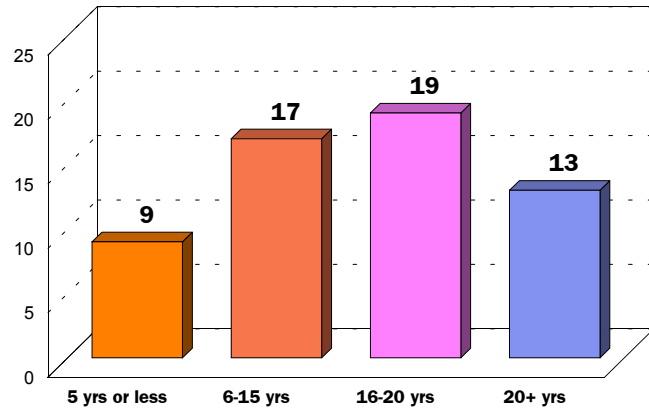
Bullying by a Colleague

Percent of Teachers by Grade Taught

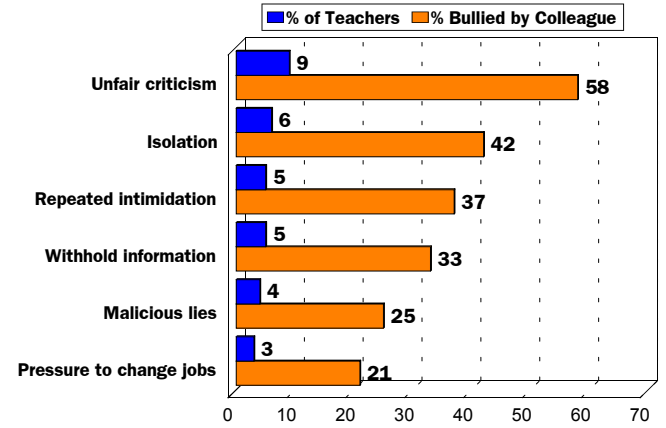


Bullying by a Colleague

Percent of Teachers by Experience

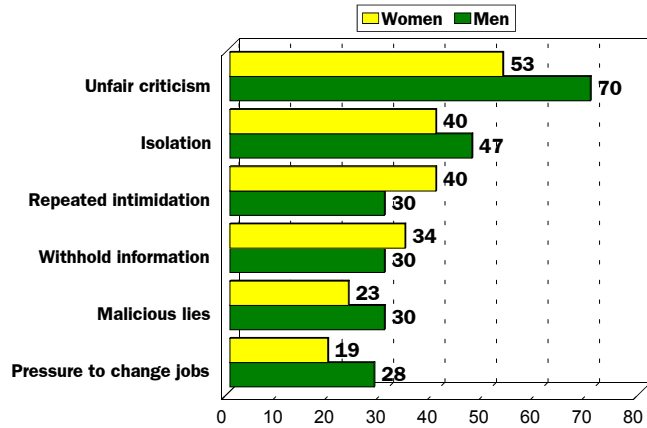


Bullying by a Colleague



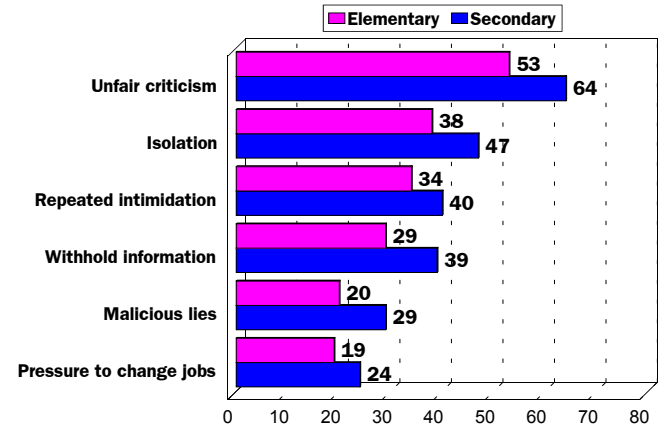
Bullying by a Colleague

Percent of Teachers Bullied by a Colleague



Bullying by a Colleague

Percent of Teachers Bullied by a Colleague

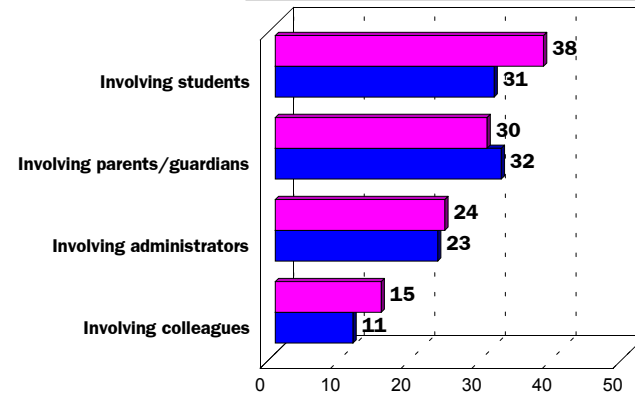


6 - The Nature of Bullying

Most Serious Incident

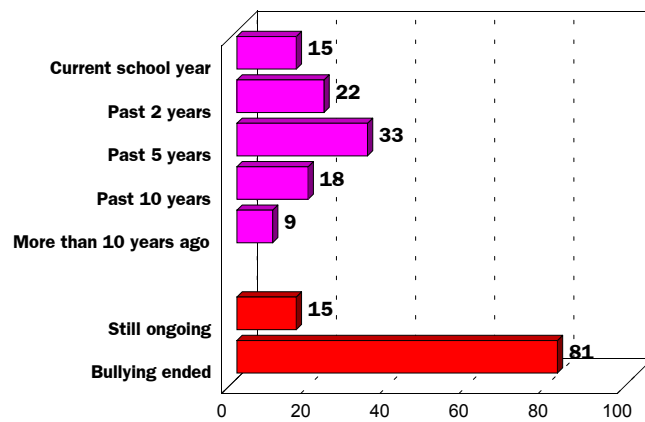
Percent of Teachers

■ All Teachers ■ Bullied Teachers Most Serious



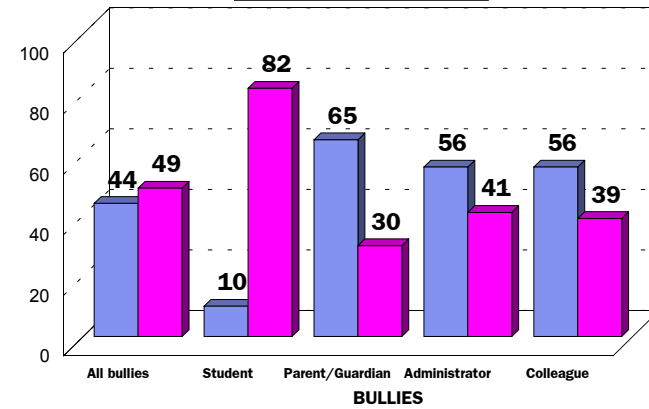
Start/Finish of Bullying

Percent of Bullied Teachers



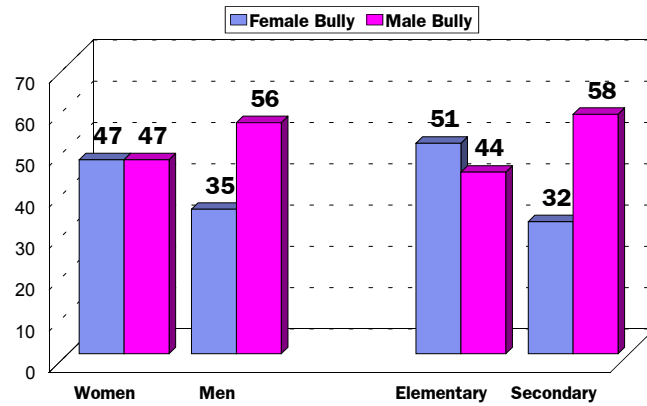
Gender of the Bully

■ Female Bully ■ Male Bully



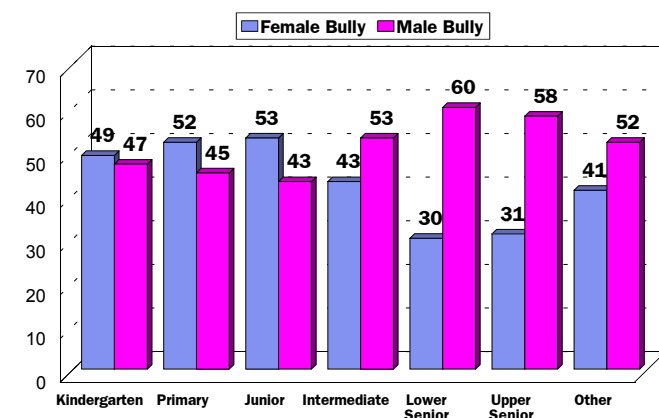
Gender of the Bully

Percent of Bullied Teachers



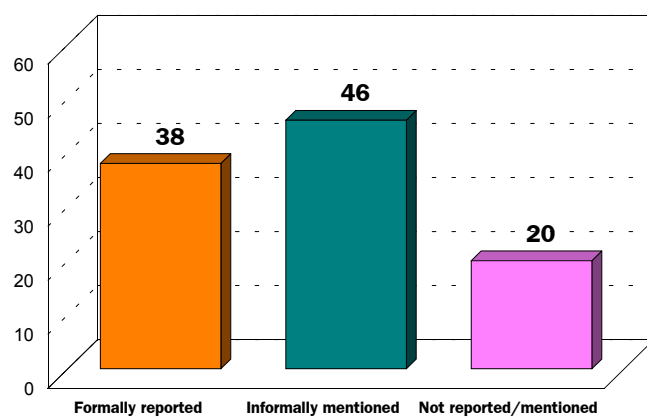
Gender of the Bully

Percent of Bullied Teachers by Grade Taught



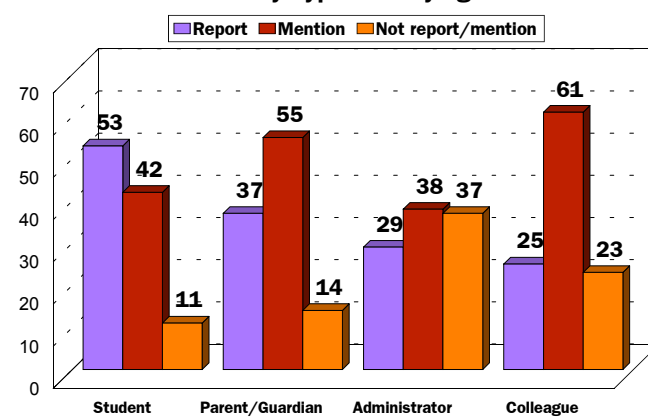
Reporting Bullying Incident

Percent of Bullied Teachers

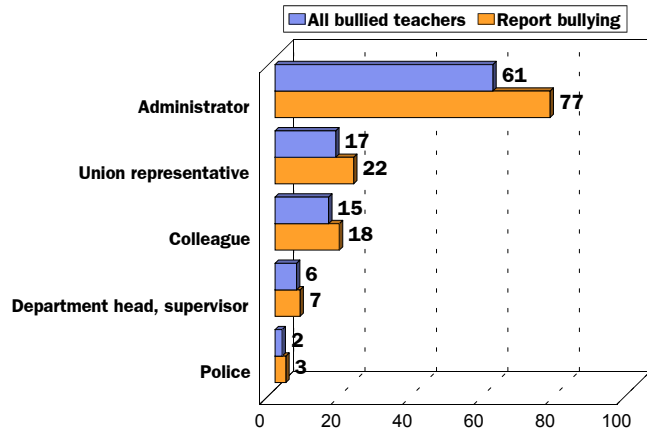


Reporting Bullying Incident

By Type of Bullying

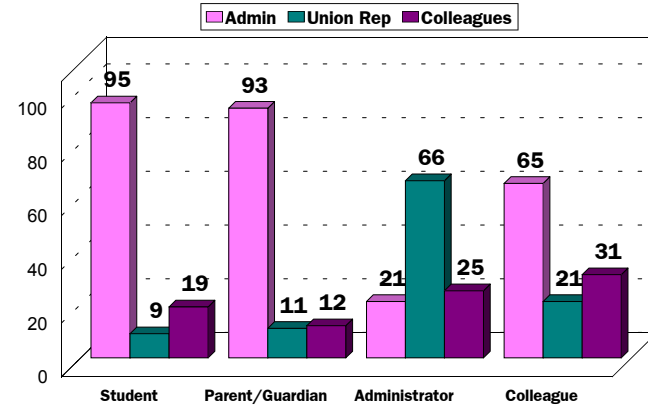


Recipient Bullying Information



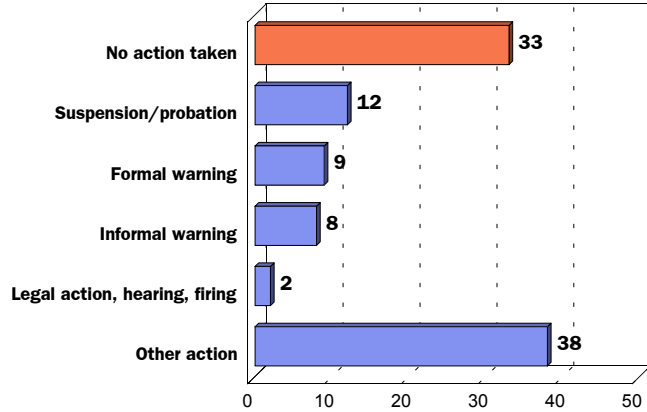
Recipient Bullying Information

By Type of Bullying



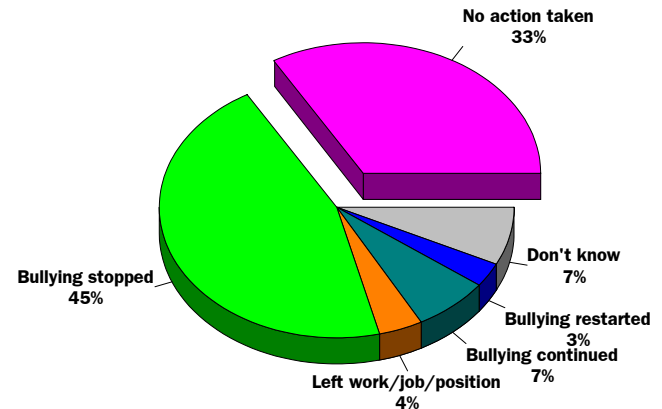
Actions Taken

Bullying Incident Reported



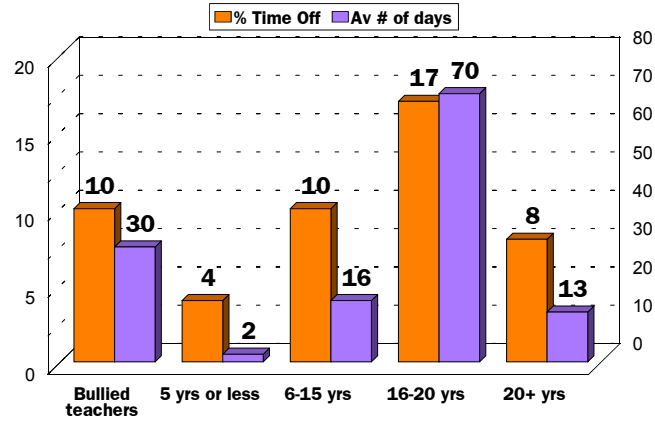
Outcome of Report

Bullying Incident Reported



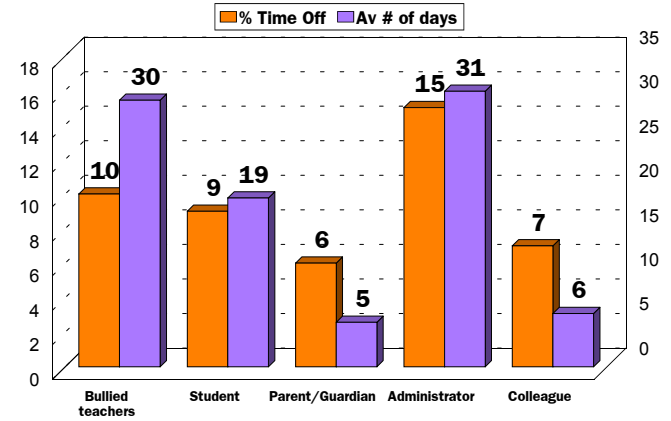
Time Off Work

Bullied Teachers by Teaching Experience



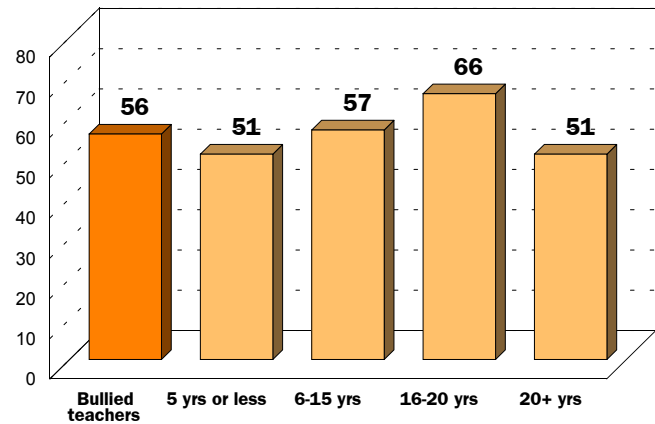
Time Off Work

Bullied Teachers by Type of Bullying



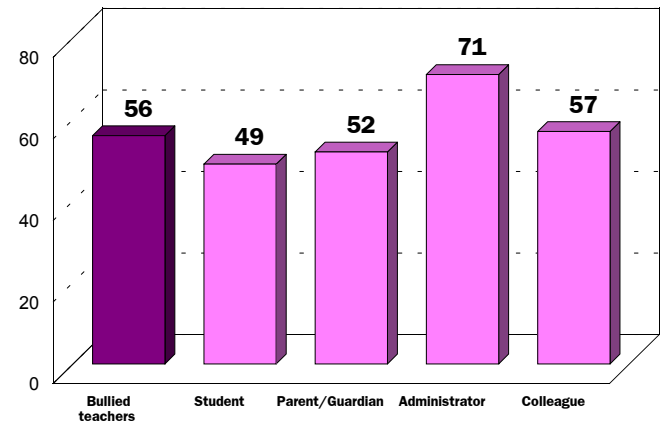
Emotional/Stress-Related Reactions

Bullied Teachers by Teaching Experience



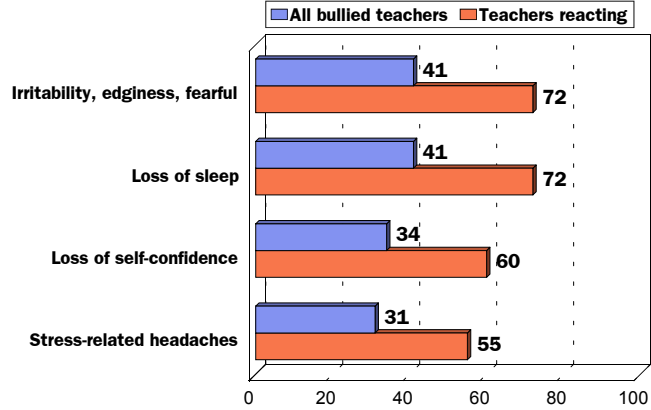
Emotional/Stress-Related Reactions

Bullied Teachers by Type of Bullying



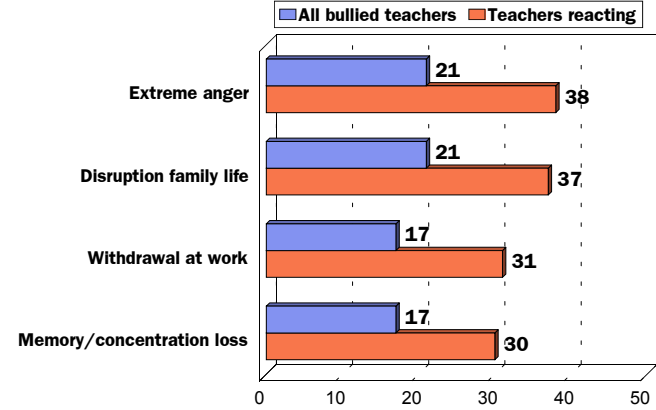
Emotional/Stress-Related Reactions

Most Common Reactions



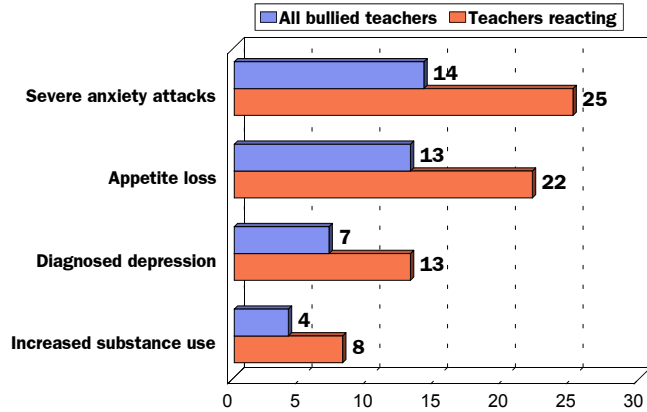
Emotional/Stress-Related Reactions

Next Most Common Reactions



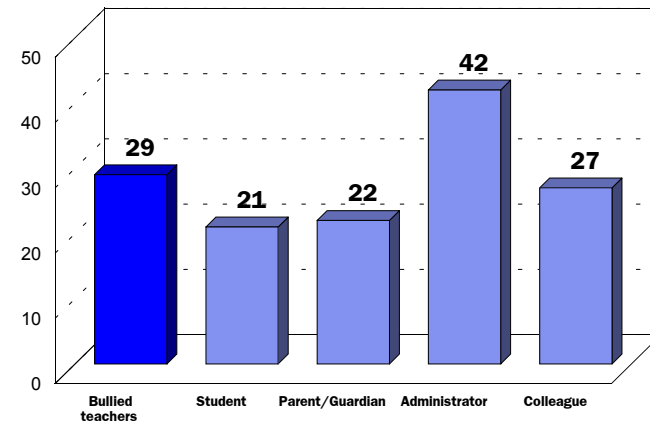
Emotional/Stress-Related Reactions

Least Common Reactions



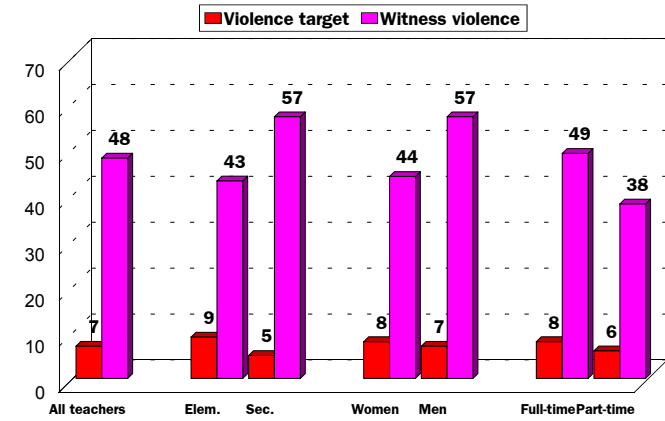
Seeking Professional Help

Bullied Teachers by Type of Bullying



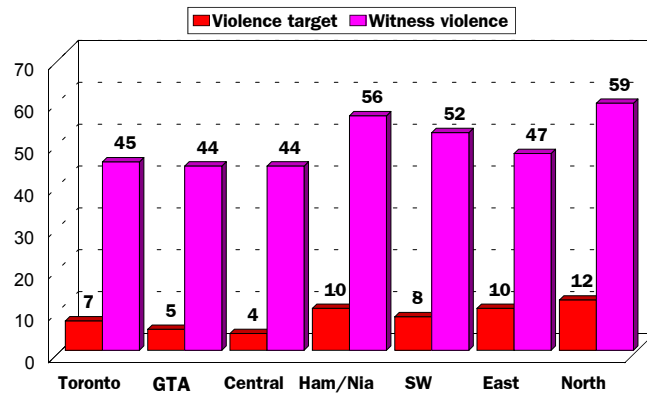
7 - Violence in Schools

Incidence Violence in Schools



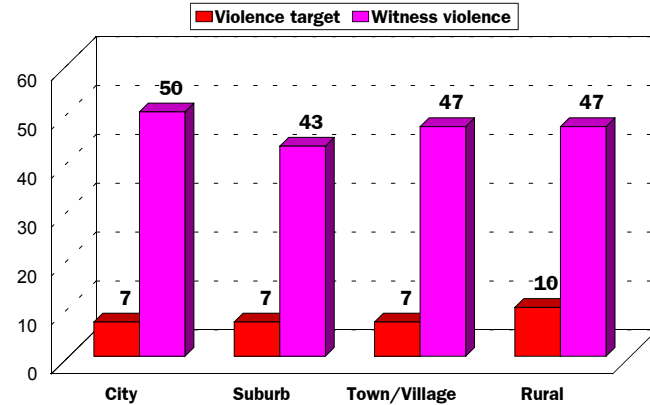
Incidence Violence in Schools

Percent of Teachers by Region



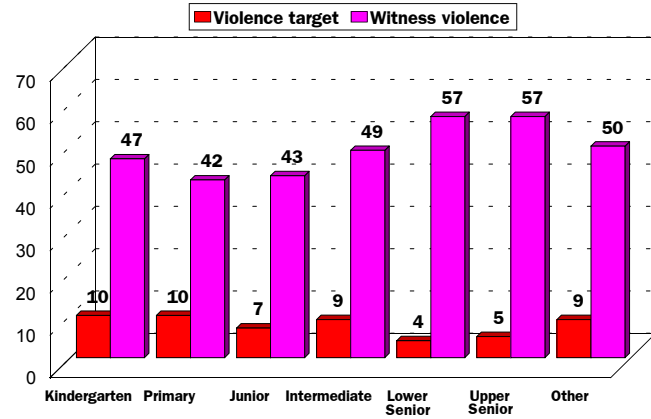
Incidence Violence in Schools

Percent of Teachers by Community Size



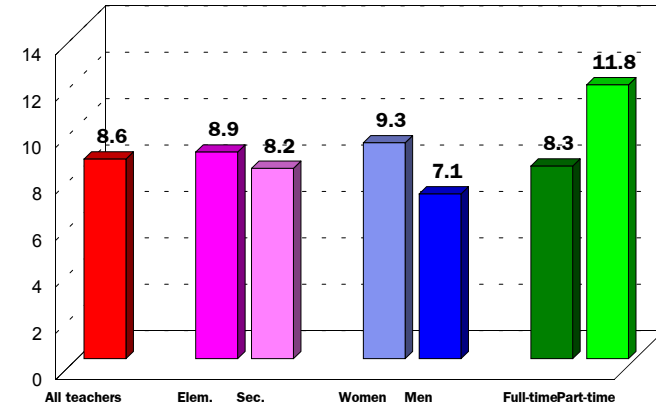
Incidence Violence in Schools

Percent of Teachers by Grade Taught



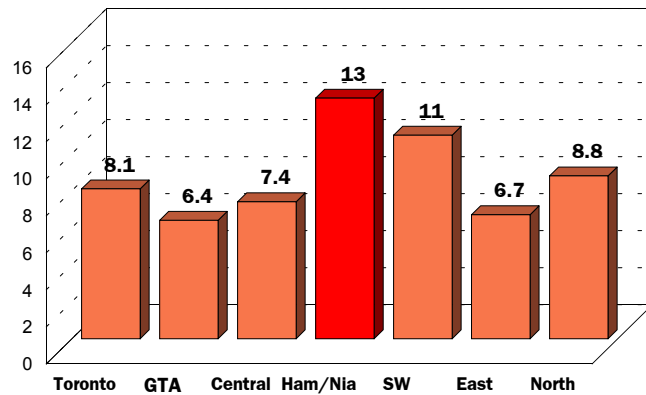
Nature of Violence in Schools

Teachers Witnessing Violence - Av. Number of Incidents



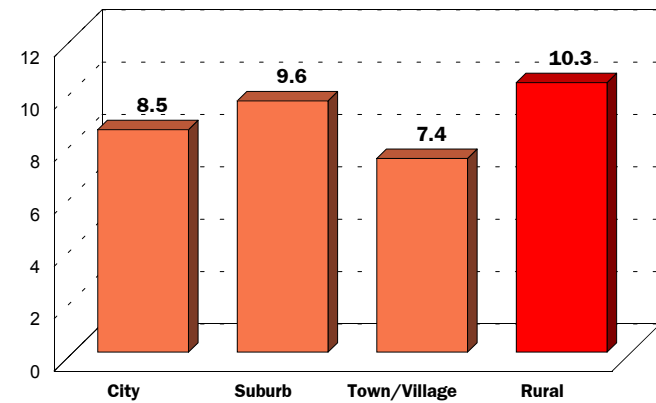
Nature of Violence in Schools

Teachers Witnessing Violence - Av. Number of Incidents



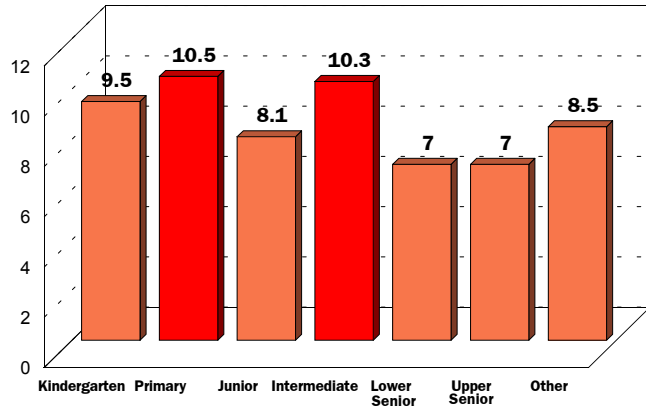
Nature of Violence in Schools

Teachers Witnessing Violence - Av. Number of Incidents



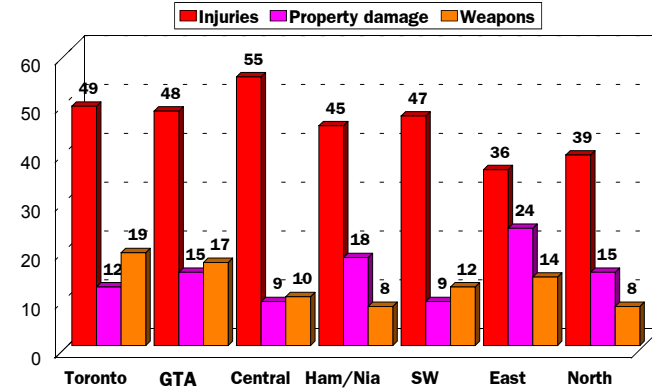
Nature of Violence in Schools

Teachers Witnessing Violence - Av. Number of Incidents



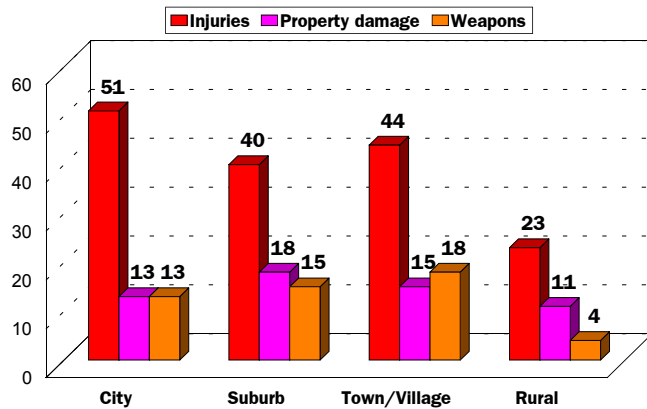
Injuries, Damage, Weapons

Teachers Witnessing Violence



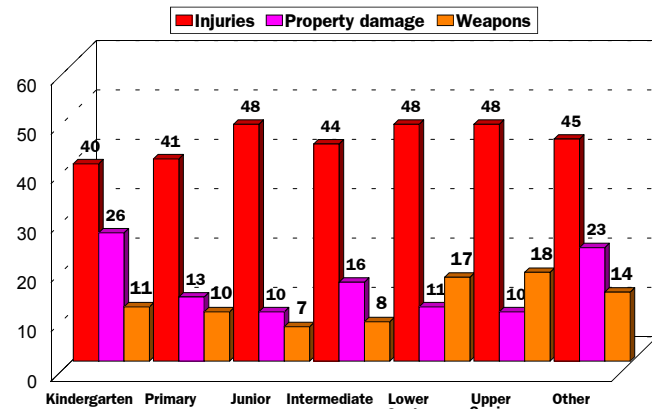
Injuries, Damage, Weapons

Teachers Witnessing Violence



Injuries, Damage, Weapons

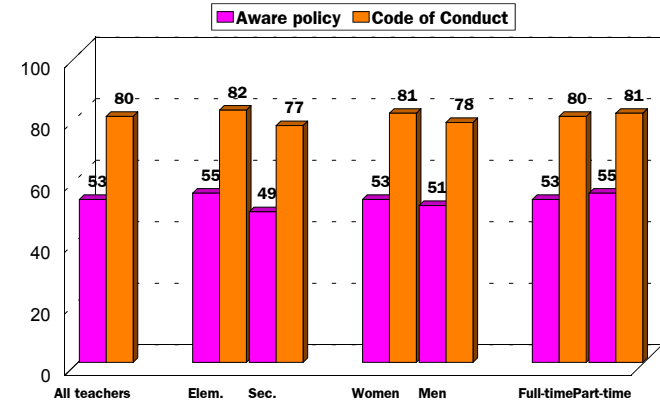
Teachers Witnessing Violence



8 - Awareness of Bullying Policies

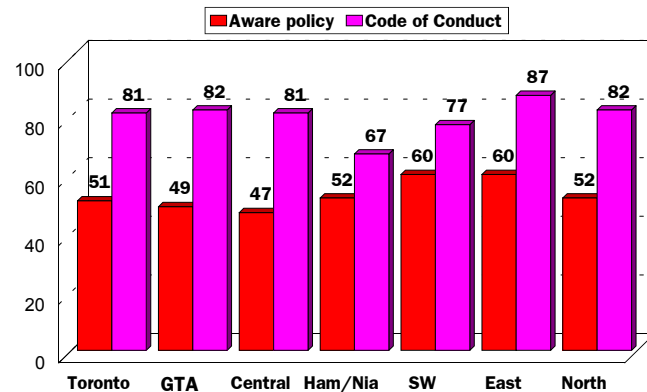
Bullying Policies

Percent of Teachers



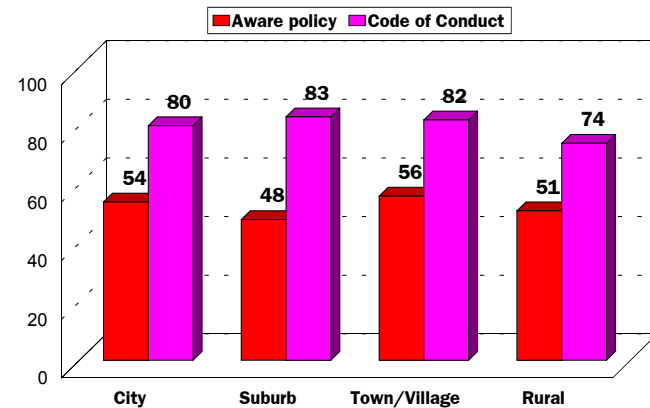
Bullying Policies

Percent of Teachers by Region



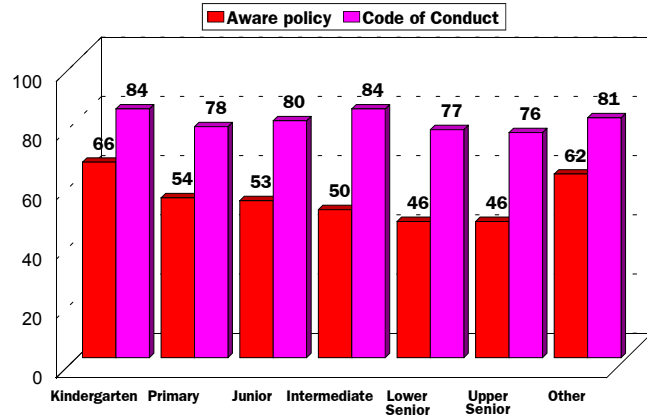
Bullying Policies

Percent of Teachers by Community Size



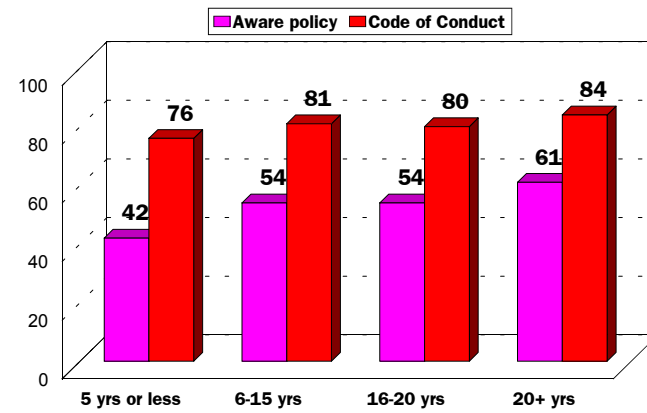
Bullying Policies

Percent of Teachers by Grade Taught



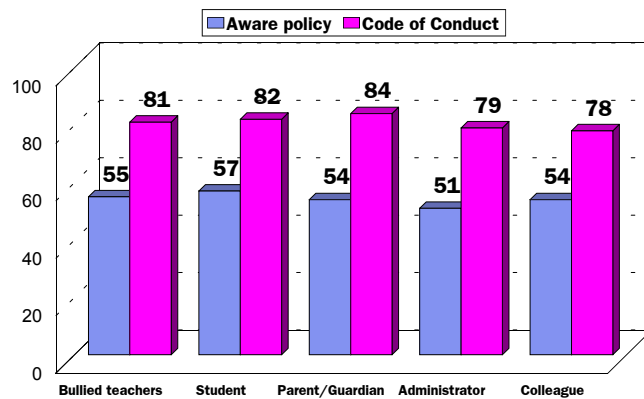
Bullying Policies

Percent of Teachers by Experience



Bullying Policies

Percent of Bullied Teachers



9 - What did we learn?

Summary of the Findings

- 2 **Over one-half of Ontario's elementary and secondary teachers have been personally bullied during their professional careers**
- 2 **About one in fifteen teachers has been a target of physical violence while teaching**

- 2 **More teachers have been bullied by their students than any other identifiable group**
- 2 **Student bullies are followed by parents/guardians, administrators and colleagues**
- 2 **More elementary than secondary teachers have been bullied by students and parents/guardians**
- 2 **Elementary and secondary teachers are equally likely to be bullied by administrators, while secondary teachers are more likely to be bullied by their colleagues**

- 2 **Typically, teachers who have been bullied by students or parents/guardians formally report the incident to a school administrator**
- 2 **Bullying by administrators or colleagues is less likely to be reported formally**
- 2 **When teachers are bullied by administrators and they then report the incident, teachers are most likely to go their union representative**

- 2 **While all types of bullying have negative impacts on teachers, bullying by administrators exacts a heavy toll**
- 2 **Teachers who have been bullied by administrators are the most likely to take time off work and then to take the longest time off**
- 2 **Also, teachers who are bullied by administrators are the most likely to suffer from stress-related consequences**